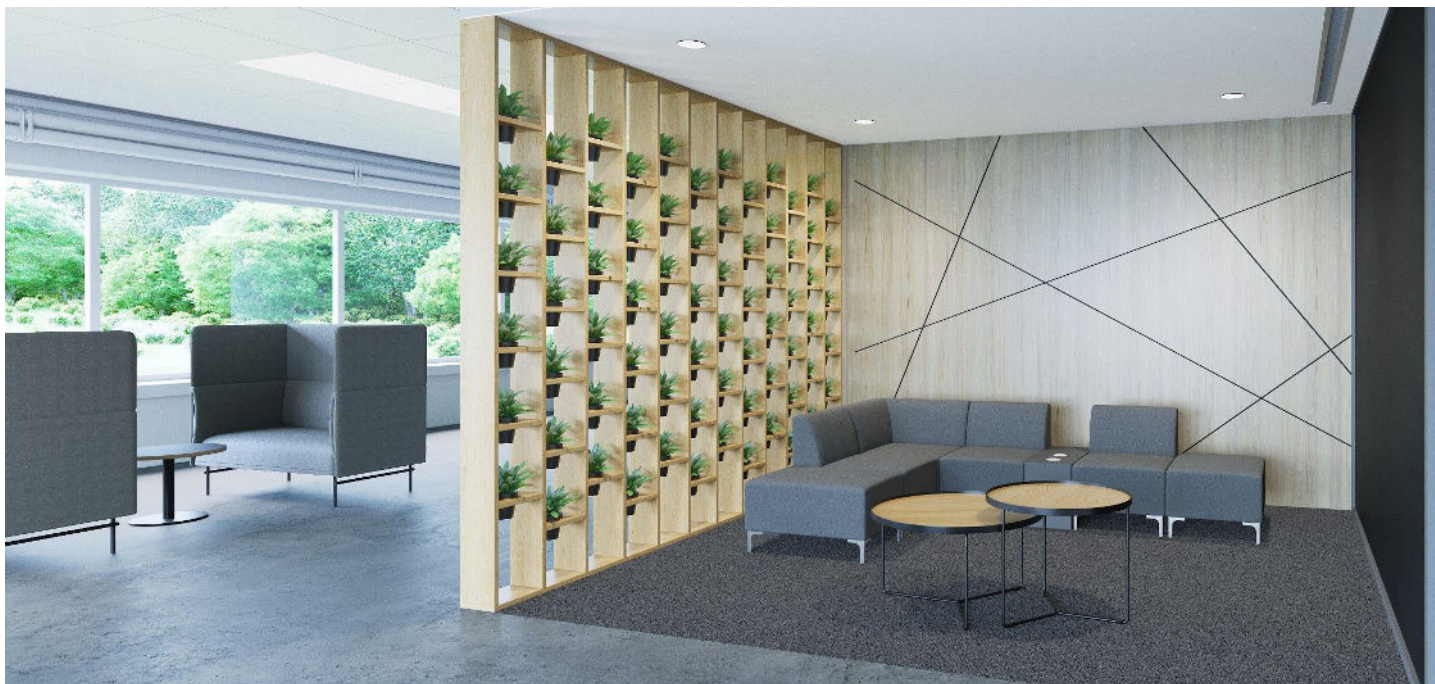


AGILE VERTICAL GARDEN WALL
ARD-VGW-2400-2700



DESCRIPTION

- ▶ Planter boxes and garden beds are all the rage at the moment in the commercial workspace environment and we have you covered.
- ▶ They bring life and added texture to any fitout, new or existing.
- ▶ Simple and stunning showpiece for any organisation's reception area & workplace, which will bring the walls alive injecting some visual energy into their environment
- ▶ 25mm melamine structure

DETAILS

Cleaning & Maintenance:

Damp Cloth, Mild Detergents

Warranty:

5 Year warranty

DIMENSIONS AVAILABLE

1800W x 200D x 2700H

2100W x 200D x 2700H

2400W x 200D x 2700H

2700W x 200D x 2700H

Available Colours:

Refer to the colour swatch page for finish options

Options:

Artificial plant options

