

Moda - Black

Product Code: MOMT341A-B

Lead Time Guide: 2 - 4 weeks

OVERVIEW

With sleek and light design lines, Moda is the go-to choice for meeting room and boardroom applications. Responsive and free, Moda self-adjusts to your movements with its weight activated auto-balance mechanism. Moda is very easy to use, with no fiddly levers, just one integrated height adjustment fingertip control.

Moda's frame is available either in black or white-grey and the soft touch mesh fabric is available in several colours. Moda is supplied fully assembled, ready to use.



SPECIFICATIONS

140kg Recommended Weight Capacity

Chair Dimensions (mm)

O/A Height: 950 – 1045~

O/A Width: 590~ (arms)

O/A Depth: 640~

Seat Width: 500~

Seat Depth: 440~

Back Width: 465~

Back Height: 540~

Seat Height: 440–535 ~

FEATURES

Black Frame

Weight Activated Auto-Balance Mechanism

‘Soft Touch’ Fabric Mesh

Integrated Armrests

Fingertip Seat Height Adjustment

ANSI/BIFMA X5.1 Certified

140kg Recommended Weight Capacity

5 Year Warranty

RELATED PRODUCTS



Moda - Black



Moda - White



Moda - Black 'Pronto'



OPTIONS 1 / BASE

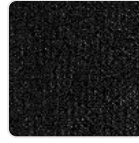


Black Nylon Base



Polished
Aluminium Base

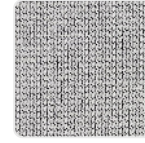
OPTIONS 2 / MESH COLOUR



Black



Charcoal (Min
order qty applies,
extended lead
time)



Light Grey (Min
order qty applies,
extended lead
time)